

Installing & Setting up the Epson R1800 printer

1. Insert the Epson Stylus R1800 software CD-ROM into your CD-ROM drive. The CD will auto run. Select 'Custom Install' from the menu, as in diagram 1 below.

Diagram 1

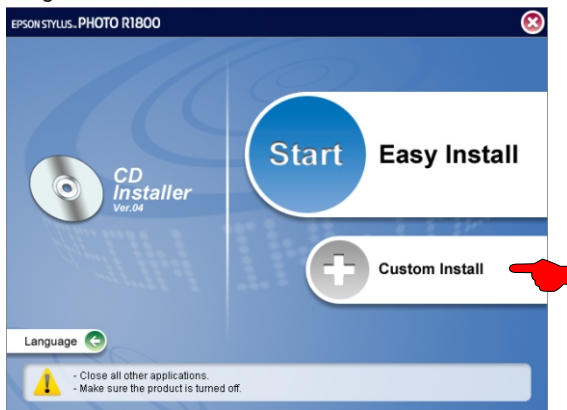


Diagram 2



2. When Diagram 2 appears click 'Adobe .ICC profiles'. Follow the on-screen instructions. The Adobe .ICC profiles will be installed.
3. Now click the printer driver option, click OK as in diagram 3. Then click Europe as in diagram 4 and click OK. The driver will now be installed.

Diagram 3

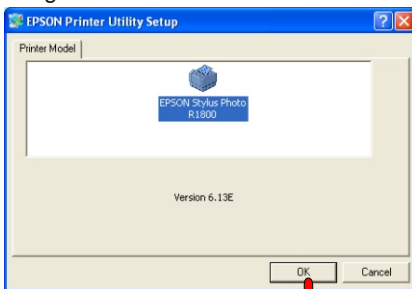
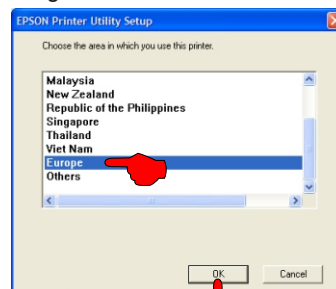
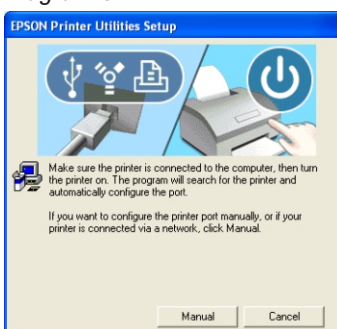


Diagram 4



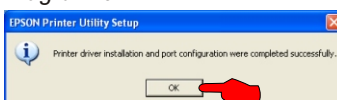
4. The utility will now copy files to your computer. Make sure the USB cable is connected to the PC and printer, then turn on the printer as instructed in diagram 5.

Diagram 5



5. After the utility has found your printer it will confirm this as in diagram 6. The Epson R1800 has now been successfully installed. Click OK.

Diagram 6



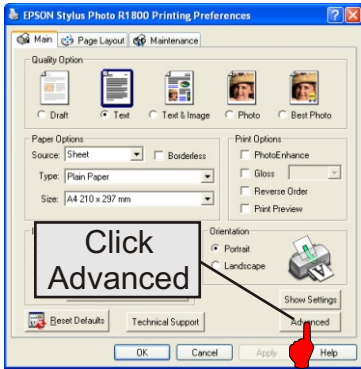
6. From the Subli-Print R1800 CD open the folder where the Subli_Print_R1800_v1.2 profile is stored. Right click on the profile and choose **Install Profile**. Note: It will not give any feedback once installed.

7. Please refer to page 2 to setup the driver for Subli-Print inks.

Epson R1800 printer Subli-Print settings

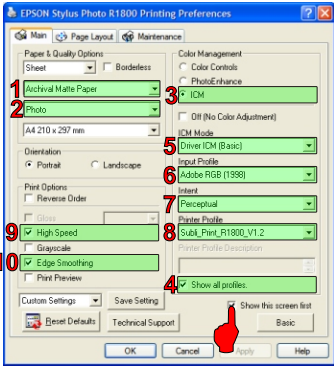
Browse to the Printers and Faxes folder. Right click on the Epson Stylus Photo R1800 and choose 'Printing Preferences'.

Diagram 7



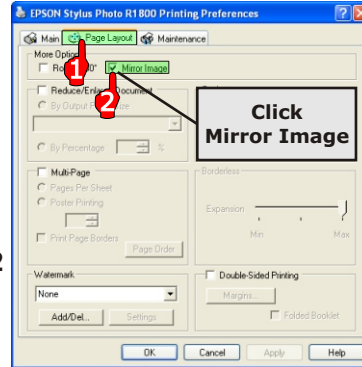
8. Click on the Advanced button as in diagram 7.
9. Starting with number 1, change all the settings as below.

Diagram 8



1. Archival Matte Paper
2. Photo
3. ICM
4. Tick show all profiles
5. Select Driver ICM (Basic)
6. Select Adobe RGB (1998)
7. Select Perceptual
8. Select Subli_Print_R1800_V1.2
9. Tick High Speed
10. Tick Edge Smoothing

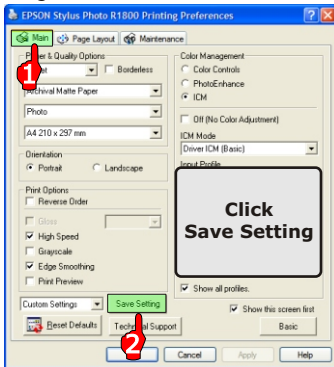
Diagram 9



1. Click Page layout
2. Tick Mirror Image

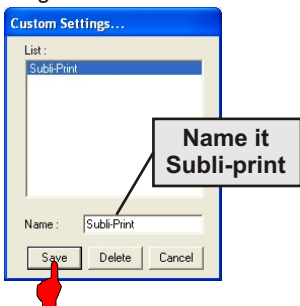
10. Click back on the Main tab (1) then click Save Setting (2) as in diagram 10.

Diagram 10



11. In Name call the custom setting Subli-Print. Click 'Save' then click OK until all open boxes are closed as in diagram 11. Settings are now complete. Follow the instructions on the next page in how to print using the .ICC profile.

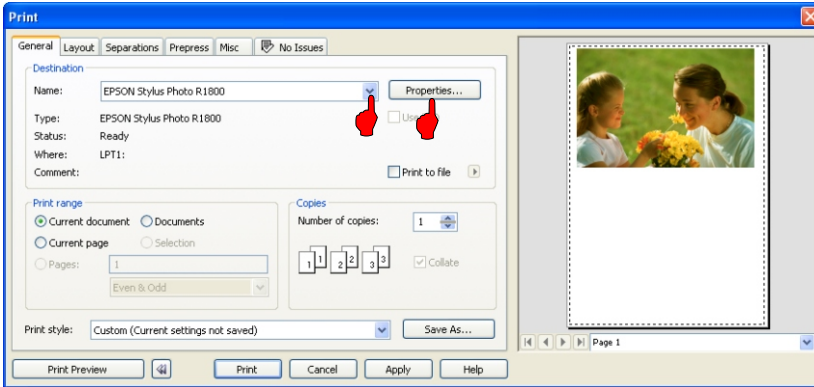
Diagram 11



Printing with the Subli-Print ICC profile

When you have your image ready on screen, click file > print. You will now see the print dialogue box below (diagram 12).

Diagram 12



The Epson R1800 properties will now show (diagram 13). Ensure the Subli-Print setting is highlighted. If it is not click on 'Subli-Print' from the drop down list. Then click OK.

Now click on the Print button (diagram 14)

Diagram 13

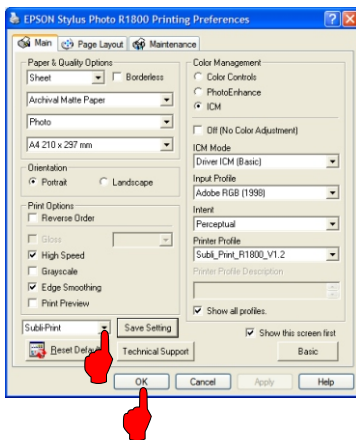


Diagram 14

