

# Installing & Setting up the Epson D88 printer

Insert the Epson Stylus D88 software CD-ROM into your CD-ROM drive. The CD will auto run. Select 'Custom Install' from the menu, as in diagram 1 below. When Diagram 2 appears click 'Printer Driver'. It will display diagram 3, click OK and it will copy files to your computer. Make sure the *USB* cable is connected to the PC and printer, then turn on the printer as instructed in diagram 4. After the utility has found your printer it will confirm this as in diagram 5. The Epson D88 has now been successfully installed. Click OK.

Now follow the Epson D88 driver setup below.

Diagram 1

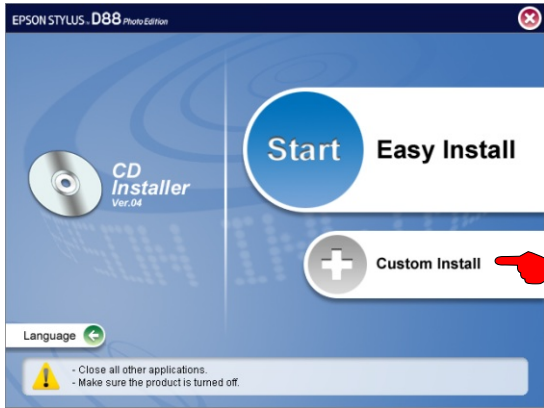


Diagram 2

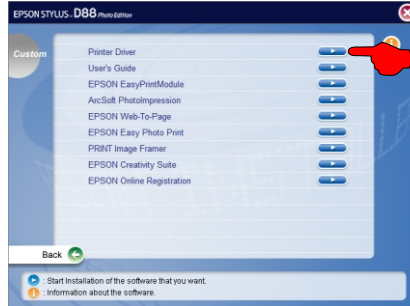


Diagram 3

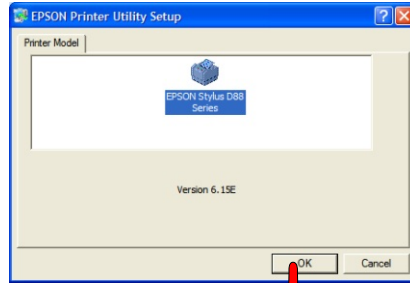
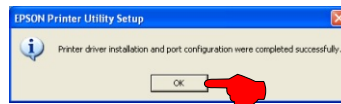


Diagram 5

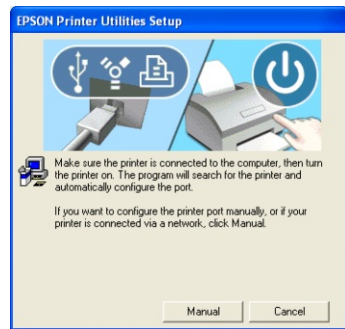


**After installation**

The Epson Status Monitor needs disabling before use. Follow the below steps.

1. Go to the printers and faxes folder.
2. Right click on the D88 and select properties.
3. Click printing preferences.
4. Click the Maintenance tab.
5. Click on the 'Speed & Progress' button.
6. Un-tick 'Show Progress Meter'.
7. Un-tick 'Disable EPSON status monitor 3'.
8. Click OK three times to close the driver boxes down.

Diagram 4



Browse to the Printers and Faxes folder. Right click on the Epson D88 printer and click on 'Properties'. Click on 'Printing preferences as in diagram 6, then follow the diagrams below.

Diagram 6

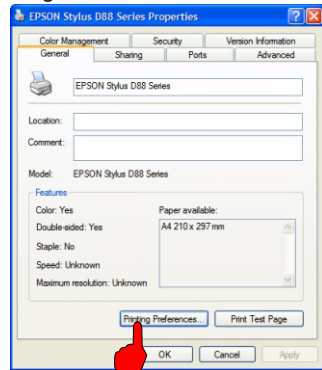


Diagram 7

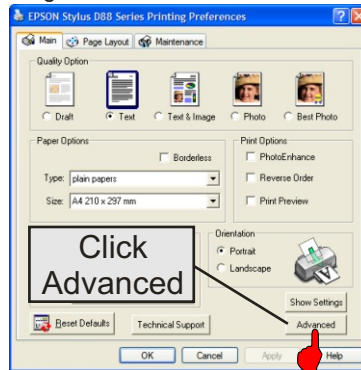


Diagram 8

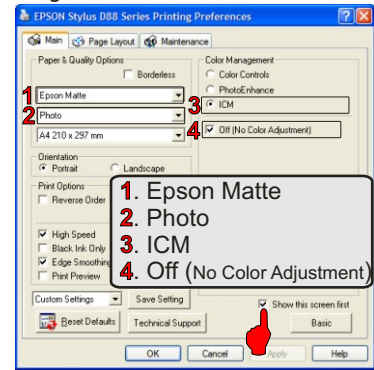


Diagram 9

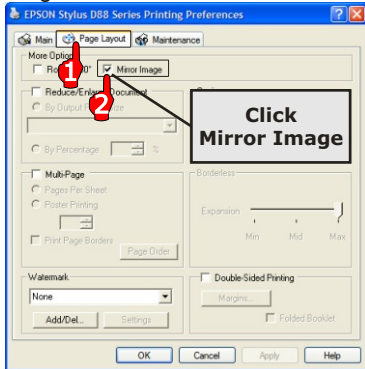


Diagram 10

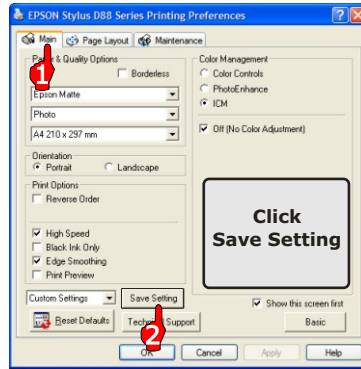
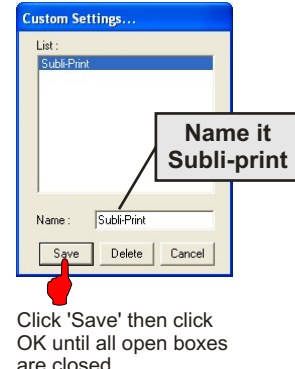


Diagram 11



Click 'Save' then click OK until all open boxes are closed.

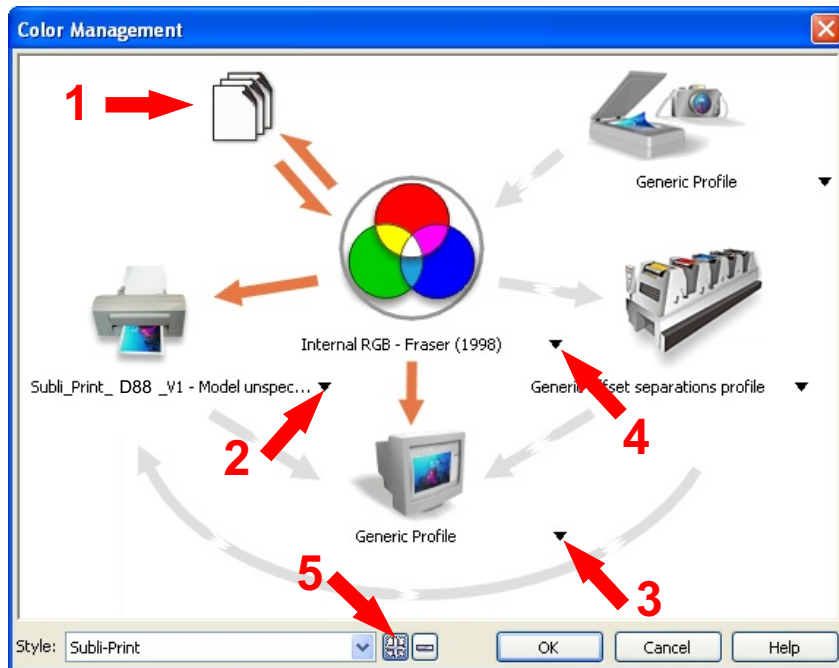
# Setting up CoreDRAW 10 onwards

Before you start this section you will need to download the Xpres Subli-Print colour profile from the Xpres website. The address is [www.xpres.co.uk/technical.php](http://www.xpres.co.uk/technical.php) You can also find the profile on the Subli-Print CD supplied with the bulk feed system. This disk can also be sent out upon request.

Close CoreDRAW. When you have downloaded the '**Subli\_Print\_D88\_V1.icm**' colour profile, right click on it and choose 'Install Profile' from the top of the menu. **Note:** *The profile will install automatically and will not give any feedback. Also on some systems you will not be able to see the 'Install Profile' option. If this is the case change the .ICM extension to .ICC then re-try.*

Start CoreDRAW and click on Window > Colour Palettes. Tick the 'Default RGB palette'. Repeat the process then un-tick 'Default CMYK palette'. Now click on Tools > Colour Management. You will now see the colour management dialogue box appear as in diagram 1 below.

Diagram 1

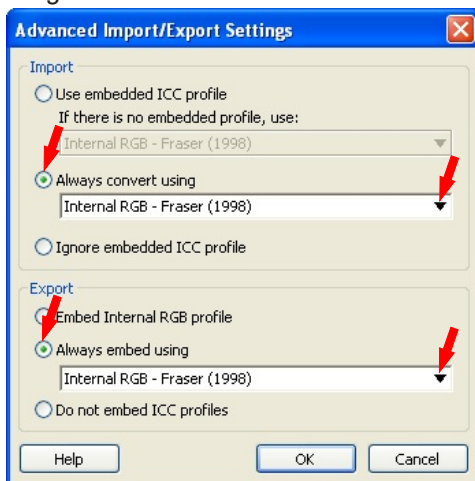


*Note: For CoreDRAW X3 users click on 'RGB (used in versions previous to CoreDRAW X3', under the 'Colour mode used for effects' section at the bottom.*

First, all the (Orange/Grey) arrows need to be set as shown above. To change the colour of the arrows (Orange colour switched on, Gray colour switched off). To turn the arrows on or off just click on the arrow itself.

**1. Configure Import-Export Settings:** Click on the image of the paper to bring up the window shown below (diagram 2). This window configures how CoreDRAW handles files that are imported to a document.

Diagram 2



**Click Import:** Always convert Using- Select Internal RGB Fraser (1998) from the drop down menu.

**Click Export:** Always embed using- Select Internal RGB Fraser (1998) from the drop down menu.

Click OK.

**2. Composite Printer:** Select the **Subli\_Print\_D88\_V1** printer profile. **Note:** if you cant choose the **Subli\_Print\_D88\_V1** from the drop down menu means the ICC profile is not yet installed on your pc or you may not have restarted Corel since the ICC installation. Close and re-launch Corel.

**3. Monitor:** Select the ICC profile for your monitor (If you also have Adobe Photoshop on your system you can select the profile you created in Adobe Gamma). You may also check out the website of your monitor manufacturer for ICC profiles for your particular monitor. If you do not have an ICC colour profile use the 'Generic Profile' instead.

**4. Internal RGB Space:** Select Internal RGB Fraser (1998)

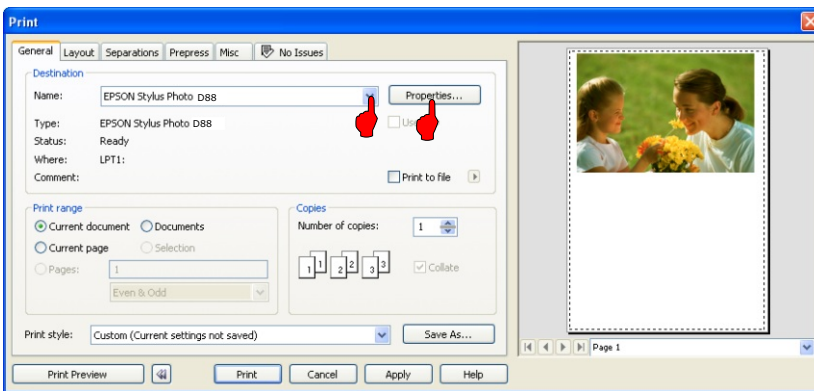
**5. Save your settings:** Click the + button and name your settings Subli-Print then Click OK.

CorelDRAW's colour management is now setup. You can now work with your images as normal.

## Printing with the Subli-Print ICC profile

When you have your image ready on screen, click file > print. You will now see the print dialogue box below (diagram 1).

Diagram 1



The Epson D88 properties will now show (diagram 2). Ensure the Subli-Print setting is highlighted. If it is not click on 'Subli-Print' from the drop down list. Then click OK.

Now click on the Misc tab (diagram 3) and ensure the **Subli\_Print\_D88\_V1** is ticked.

**Note:** Ensure the 'Apply ICC profile' is un-ticked when using other printers.

Now click the print button.

Diagram 2

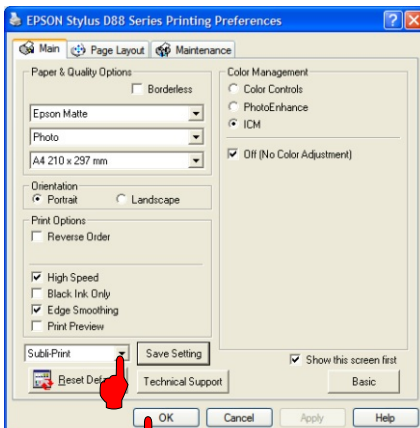


Diagram 3

