



# Subli-Print® setup for Adobe Photoshop CS2

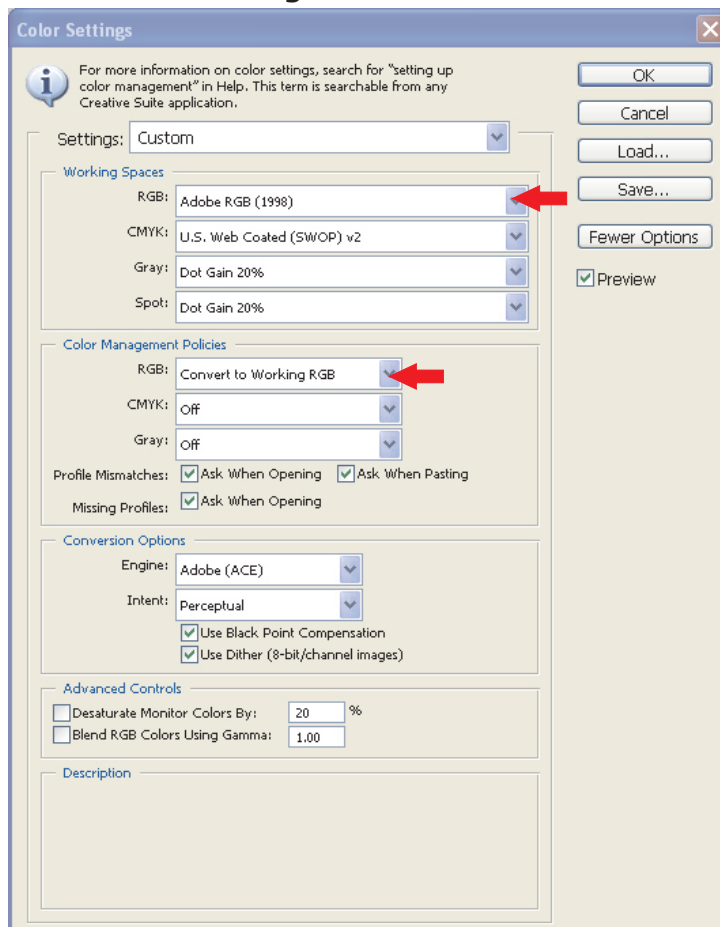
Photoshop's color space needs to be set to the working space of which the Subli-Print ICC Profile was created. This then allows for a more accurate screen display of your images. The accuracy of the displayed image on your monitor will highly be dependent on the quality of your monitor and more important a calibrated monitor ICC profile. Photoshop's Adobe Gamma will allow you to calibrate and save an ICC profile for your monitor.

If you have not already done so, follow the steps below to set up your monitor and Photoshop.

Use Adobe Gamma located in the Control Panel folder to set up your monitor  
Start – Settings – Control Panel Double click the Adobe Gamma Icon and follow the on-screen wizard and save your adjustments.

Start Photoshop CS2 and bring up the color settings window, by clicking on Edit | Colour settings.

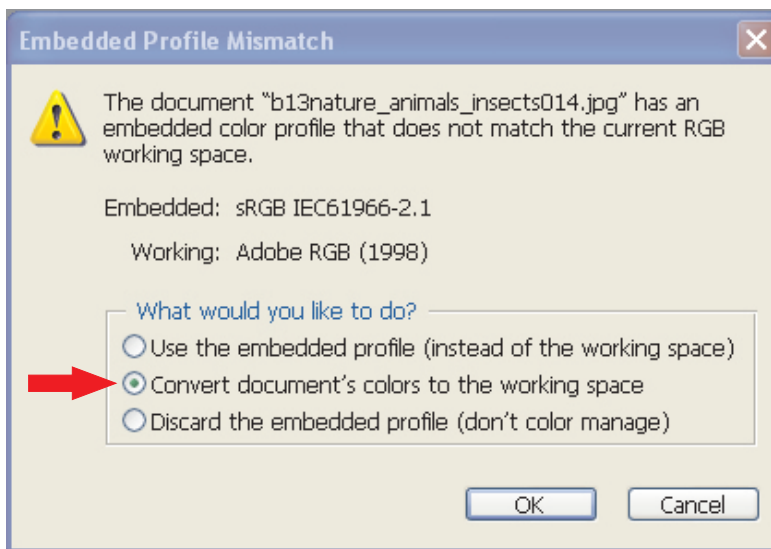
## Edit – Color Settings...



Set the Working Space RGB: to Adobe RGB (1998)  
Set the Color Management Policies to Convert to Working RGB  
Leave the other settings as shown above  
Click OK

Photoshop's RGB working space is now set and Adobe Gamma is controlling your monitor profile.

When opening images in Photoshop, you may encounter a profile mismatch warning.



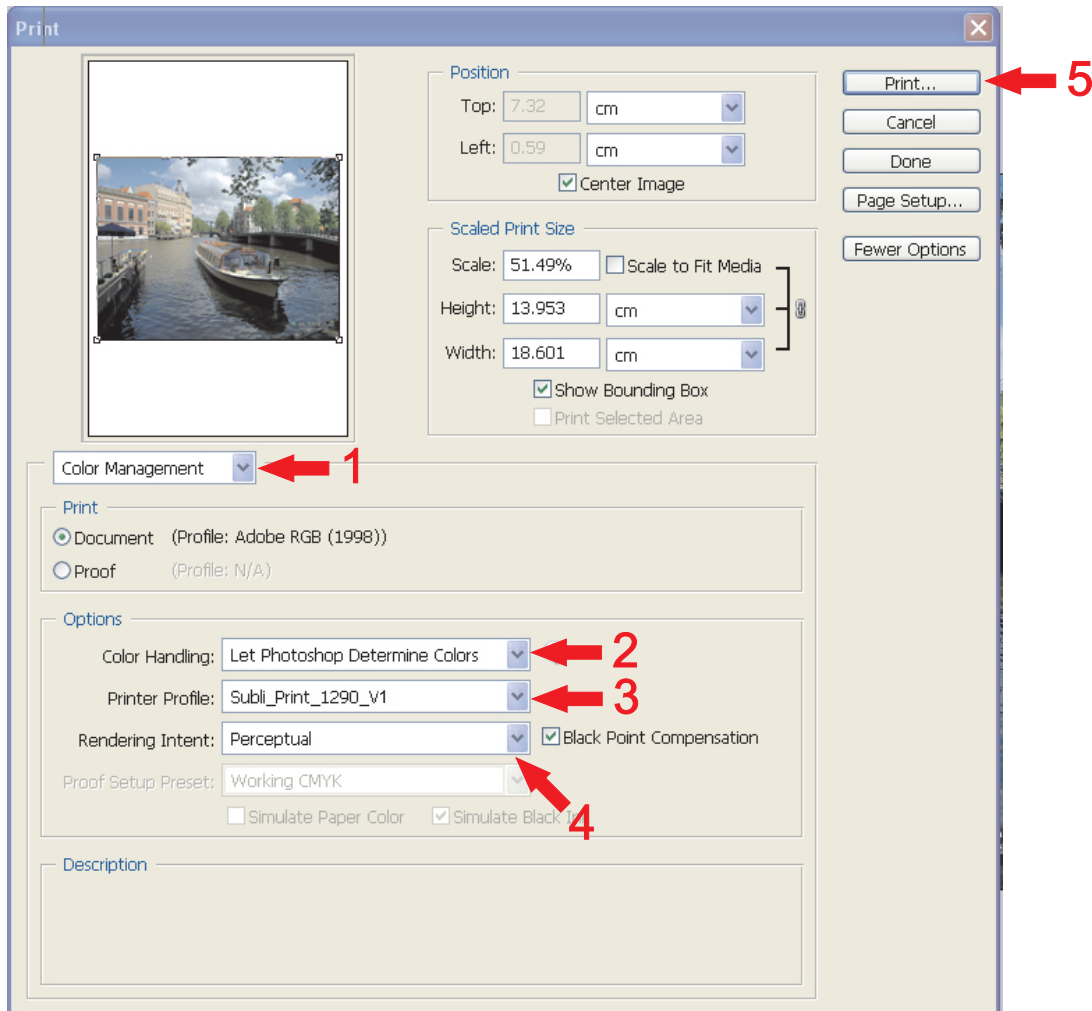
Select Convert document's colors to working space and click OK

Work on your images as normal and follow step – Printing images from Photoshop using the Subli-Print ICC Profile.

## Photoshop Printing with the Subli-Print ICC Profile

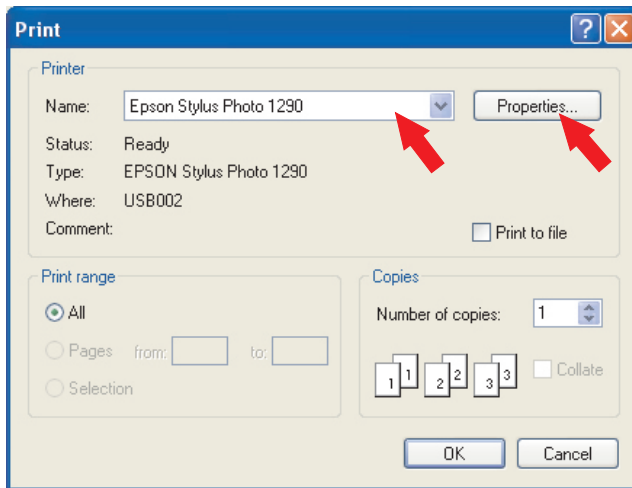
Close Photoshop. Right click on the 'Subli\_Print\_1290\_V1.icm', and choose 'Install Profile' from the drop down list. If you do not see 'Install Profile' from the drop down list copy the profile to your desktop first and re-try. Re-start Photoshop.

When your image is ready to print, Click File - Print with preview



1. Select colour management from the drop down list.
2. Select Let Photoshop determine colors from the color handling option.
3. Select the Subli\_Print\_1290\_V1 from the printer profile drop down list.
4. Select Perceptual from the rendering intent drop down list and ensure black point compensation is ticked.
5. Click print.

Note: If you don't see any reference to Subli-Print RGB in the print space list means the ICC profile is not installed in your system or Photoshop has not been restarted since the profile was installed (Restart Photoshop).

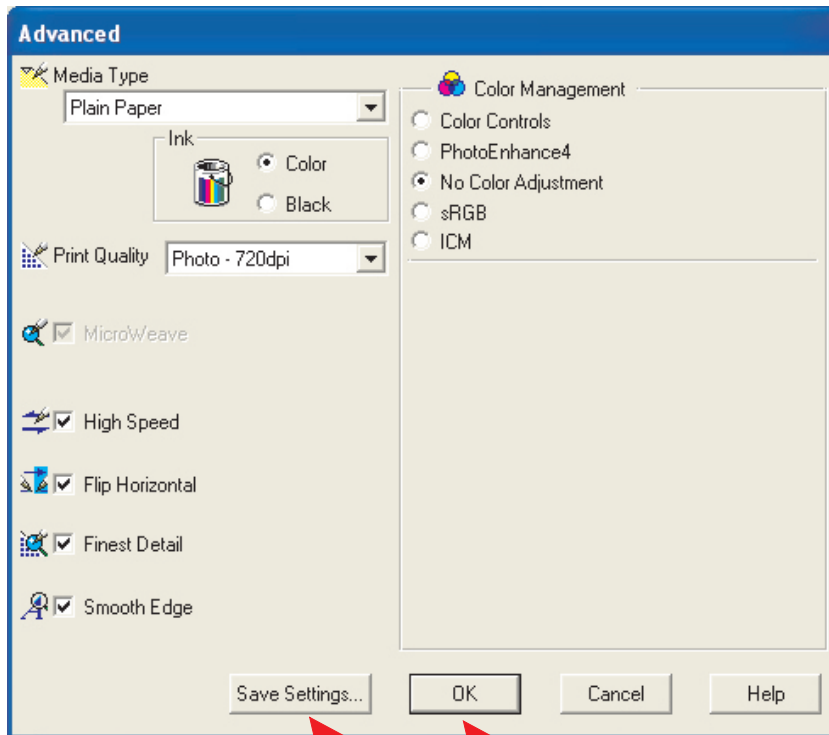


Select your printer and click **Properties**

Click **Custom** then **Advanced**

Change the advanced section as it appears below, click **Save Settings** and name it Subli-Print, then click **Save**.

Click **OK** (takes you back to the previous screen as above)



Now click **OK** to print.