



Subli-Print setup for Adobe Photoshop versions 7, 8 (CS) & Elements 2

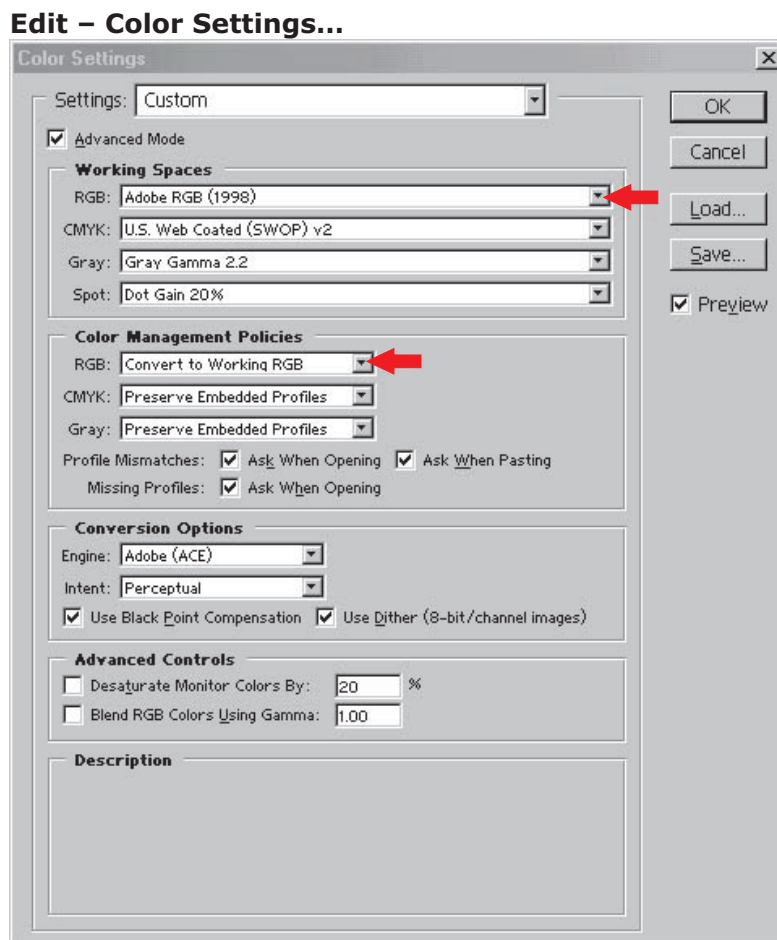
For Photoshop Elements 2 users, start at page 3.

Photoshop's color space needs to be set to the working space of which the Subli-Print ICC Profile was created. This then allows for a more accurate screen display of your images. The accuracy of the displayed image on your monitor will highly be dependent on the quality of your monitor and more important a calibrated monitor ICC profile. Photoshop's Adobe Gamma will allow you to calibrate and save an ICC profile for your monitor.

If you have not already done so, follow the steps below to set up your monitor and Photoshop.

Use Adobe Gamma located in the Control Panel folder to set up your monitor
Start – Settings – Control Panel Double click the Adobe Gamma Icon and follow the on-screen wizard and save your adjustments.

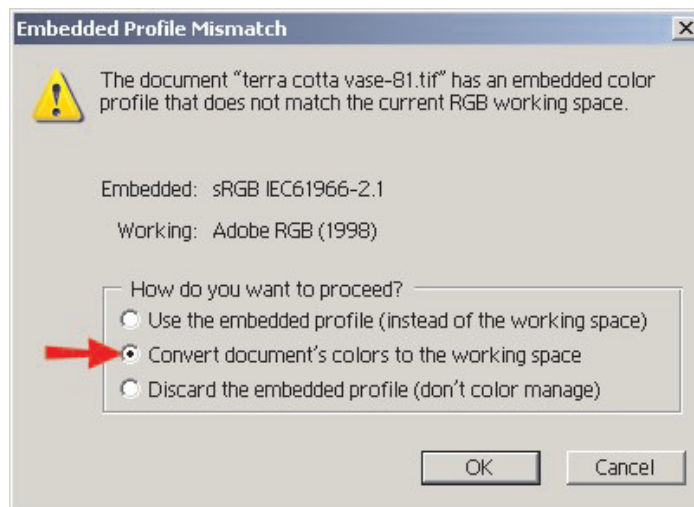
Start Photoshop 7 or 8 and bring up the color settings window



Set the Working Space RGB: to Adobe RGB (1998)
Set the Color Management Policies to Convert to Working RGB
Leave the other settings as shown above
Click OK

Photoshop's RGB working space is now set and Adobe Gamma is controlling your monitor profile.

When opening images in Photoshop, you may encounter a profile mismatch warning.



Select Convert document's colors to working space and click OK

Work on your images as normal and follow step – Printing images from Photoshop using the Subli-Print ICC Profile.

Photoshop Printing with the Subli-Print ICC Profile

Close Photoshop. Right click on the 'Subli_Print_1290_V1.icm', and choose 'Install Profile' from the drop down list. If you do not see 'Install Profile' from the drop down list copy the profile to your desktop first and re-try. Re-start Photoshop.

When your image is ready to print, Click File - Print with preview



Click **Show More Options 1** This will expand the window shown above

Click the drop down arrow **2** and choose **Color Management**

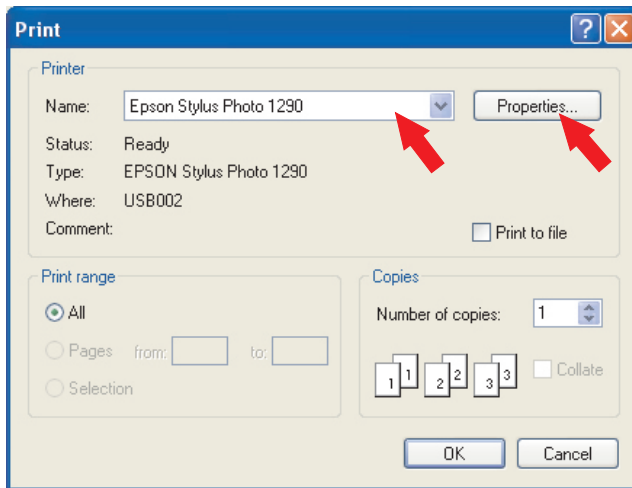
This will expand the window as shown above.

In **Source Space:** Click **Document 3**

From the drop down menu for the **Print Space: Profile: 4** Select the Subli-Print ICC Profile for your printer.

Click **Print 5**

Note: If you don't see any reference to Subli-Print RGB in the print space list means the ICC profile is not installed in your system or Photoshop has not been restarted since the profile was installed (Restart Photoshop).

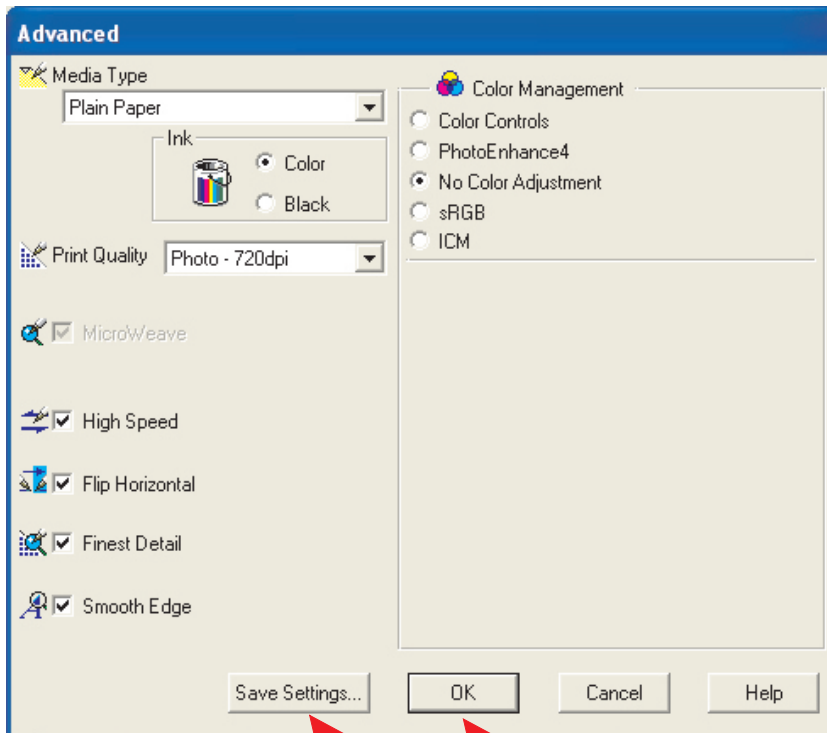


Select your printer and click **Properties**

Click **Custom** then **Advanced**

Change the advanced section as it appears below, click **Save Settings** and name it Subli-Print, then click **Save**.

Click **OK** (takes you back to the previous screen as above)



Now click **OK** to print.