

Make sure all the relevant parts are included with your system

1. Cartridge/Bottle assembly
2. Tube Support (4 pieces)
3. Air Filters
4. Syringe (for re-filling the bottles)
5. CD (includes ICC colour correction profile, and instructions for setting up the profile in the printer driver)



Press the ink button on your machine and when the cartridges move to the *remove* position unplug the mains cable at the rear.



Use a small screwdriver to gently lever the lid hinge out whilst pulling the lid towards you.



Complete the lid removal.



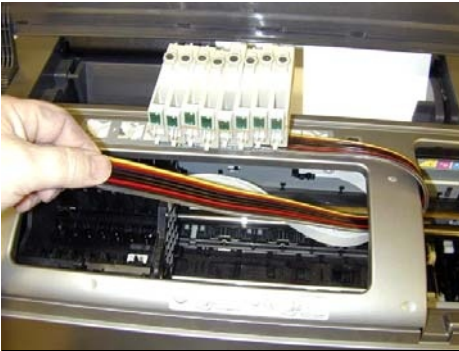
Remove any existing cartridges.



Manually move the printhead as far as it will go to the left of the machine (this will move easily if you have unplugged the mains)



Feed the Easy Flow cartridges underneath the printer housing



After feeding the cartridges all the way through the housing, lay them out of the way on top of the printer



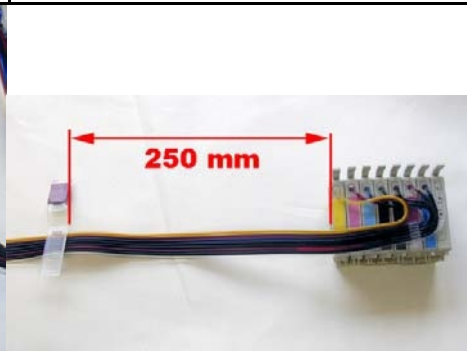
Slide the printhead back to the cartridge removal position.....



...remove the elastic band and place the cartridges into their relevant colour slots.
DO NOT PUSH THEM DOWN YET



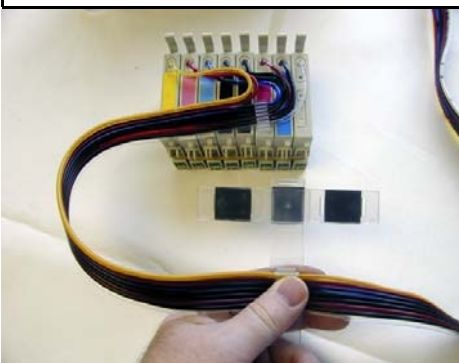
Fix the angled tube support as shown. The sticky pad is face down with the clear tube furthest away from the angle.



This support needs to be 250mm away from the yellow cartridge. The support easily slides along the tube for positioning.



Use a marker to identify the position of the finished tube support. From the edge of the opening to the first mark is 90mm and 200mm to the second mark.



Assemble the tube support as shown and remove the three pieces of backing tape from the double sided tape.



Position the tube support as shown between the two marks made previously (the 90 and 200mm).



Take off the backing tape and position the small tube clamp on the right of the printer housing and slide the tube into the clip.



Slowly lay the bottles down as shown and stand them back up after 2-3 seconds. This self levels the ink in the small chambers.



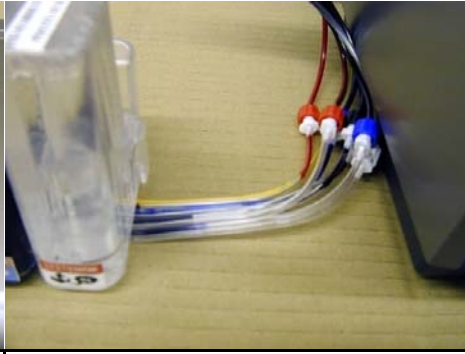
Do Not Raise Bottles Higher Than The Printer. Remove the rubber stoppers.....



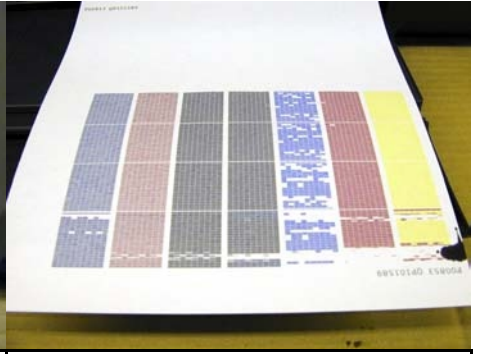
...and fit the air filters.



Firmly push down the cartridges now until they click into place. Plug the mains lead back in and turn the printer on.



The machine will now go into an ink charge routine. Do not worry about any small amounts of air you see in the tubes. This will work it's way out of the system during the next few moments.



Run the auto nozzle check routine from the utility section of your printer driver. It may look something like this. You may have to run this twice.

Do not run the auto nozzle routine more than twice. If the nozzle check is not perfect let the machine sit for an hour or so to settle down then run a normal nozzle check and possibly the manual head clean.

Re-filling Bottles

Do Not Allow The Ink To Fall Below The Red Line Or The Top Of The Sticker On The Bottles

Lay the bottles down and remove the filter cap of the colour you wish to re-fill. Use the syringe (with the small nozzle attachment you find in the handle) to fill this colour. Note you cannot fill it further than the hole allows (do not stand it up so you can fill the smaller chamber—this system works with the smaller chamber partially empty). Clean the syringe between any further colours you may wish to fill with warm water. Return the bottles to the upright position and replace any filter caps.

